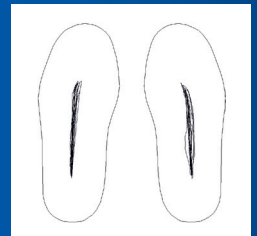
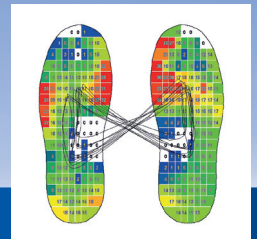
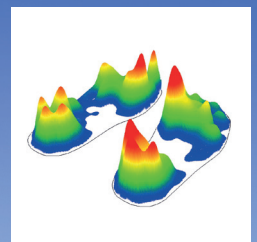


# WLAN Measuring Insoles



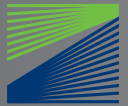
## DYNAMIC PRESSURE

MEASUREMENT WITHOUT ANY CABLE AT ALL

### medilogic WLAN Measuring Insoles

- Completely no cables
- Maximum range of movement
- Working with WLAN interface of your PC, tablet, laptop
- Battery operated online data transmission of each insole
- Storage of data even beyond transmission range
- Stress analysis while walking
- Recording an documentation the status of foot
- Support of diagnose
- Insure quality of supply
- Intuitive and practicable
- Mobile use
- CE-certified medical device class I m

Products for humans



# WLAN Measuring Insoles

## A functional measurement system on highest technical level

### medilogic WLAN Measuring Insoles

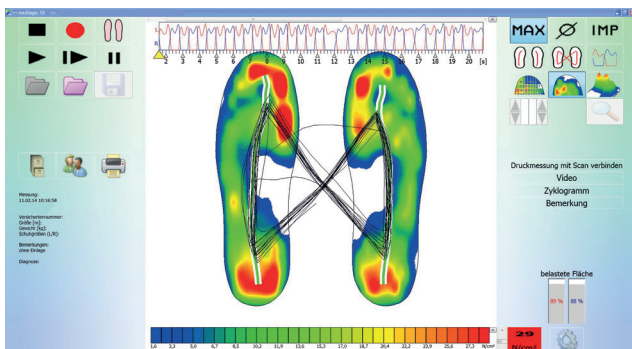
- 5 pair flexible sensor insoles as standard
- User defined shapes can be customized
- Variable length of shaft

### Intuitive Software

- Ergonomic design
- Real time picture during measuring
- Storing with integrated customer database
- Playback and analyzing of recorded frequency of steps or single steps
- Comparison of two measurements
- Pressure distribution in maximum value
- Pressure distribution in average value
- View in 2D / 3D
- Gait line
- Playback the steps in real time or slow motion
- Print out with your own logo, in 1:1, abstract report

### Service

- Technical support via phone for free
- Technical support via remote maintenance for free



### Interface

- CAD-Software: PedCad, Rothballe, ID:CAM, GloboCad, IETEC, ComfortSpline, Ortho-Fit, Gebiom
- Business solution software: Cosinos, Paedus, Rothballe, Orthotronic, Orthopro, Dicompacs, TopM, opta data, GDT, Brunie, Acriba, THEDEX, SaniConcept, MM-Orthosoft, TEMI TBI-Soft, Sanivision
- Cherry Chip-Card-reader
- Email-Data-exchange directly via medilogic
- Software cross fade with 2D Foot scan

### Technical Data (may change without notice)

**Insoles:** max. 240 SSR sensors per insole (depending on size and shape); available standard sizes: 19/20 to 49/50; user defined shapes and length of shaft can be customized to requirements

**Range of measurement:** 0,6 to 64 N / cm<sup>2</sup>

**Sampling Rate:** 100 Hz; max. 400 Hz for Sports Version

**Transmission Insole:** Weight: 125 g inclusive WLAN module; size of WLAN module incl. connector: 90 mm x 60 mm x 20 mm; power supply: internal rechargeable battery; rechargeable battery via USB interface

**Wireless Transmission:** Carrier Frequency: 2,4 GHz; Range: approx. 100m outside, approx. 25m inside buildings; Ce-certified medical device class I m

### Recommended minimum Computer

**Configuration:** x86 compatible processor; 4 GB RAM; 1 free USB Port; 1 USB port if printer use is intended; Windows® 7 / 8 / 10

06 / 2016

Products for humans